



ALPIO 1912 WB

(Equipped with negative pressure ink supply system and mute linear motor system)

Industrial High Speed Dye Sublimation Printer



Sublimation Ink

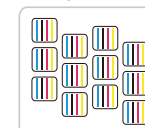


Magenta Vision Polska Sp. z o.o.
Okulickiego 26, 05-500 Piaseczno, Poland
support@magenta-vision.com

* 1.9m Twelve I3200 Print Heads Speed

720x600dpi - 1pass	530 m ² /h
720x1200dpi - 2pass	298 m ² /h

Twelve I3200 Heads
CMYK





Both the sublimation and direct-to-textile printers are examples of our expertise and engineering: top performance , reliable and precise. With Grando series printer , you can maximize production while controlling quality and minimizing costs for beautiful soft signage, apparel and interior decor items that will set your business apart from the competition . Wide applications in clothing, home decoration fabrics, sampling, shirt, canvas bags, bolster, scooter, flags, textile gadgets etc.



● Technical Specifications

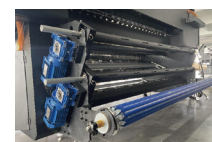
Model		ALPIO 1912 WB
Print Head		Twelve I3200-A1 Print Heads
Droplet Size		3.5pl
Printing Width		74.8 in.(1900 mm)
Printing Speed		1pass(720x600dpi): 5704 sqft (530 sqm/h) 2pass(720x1200dpi): 3207 sqft (298 sqm/h)
Ink Cartridges	Type	Dye Sublimation Ink
	Supply	Negative pressure ink supply system
	Color	CMYK / CMYKLCMLKLLK
Print Media		Heat Transfer Paper
Print media control		Air expansion shaft Take-up System
Dryer		External Automatic Air Heat Integrated Dryer
Moisturizing unit		Automatic Cleaning and Moisturizing Integrated Captop
RIP Software		RIIN Beidou Textile Version, Maintop6.0, photoprint, ONYX, NeoStampa, PrintFactory etc.
File Format Supported		JPG / TIFF / PDF, etc
Computer Configuration	Operating System	win7 64 bit / win10 64 bit
	Hardware Requirements	CPU: i7 Processor (9th generation or higher) Hard Disk 500g+ (solid state disk) Operating Memory 16g, Graphics Card: ATI display 4G memory, Motherboard: ASUS, Gigabyte
	Data transmission	USB3.0
Power requirement	Input Voltage	AC 220 V ± 5%, 16A, 50 HZ± 1
	Printer	2500W
	Drying unit power	Maximum 8kw
Weight(with stand)		2337 lb. (1060 kg)
Working Environment		Temperature 15-32 degrees C, Humidity: relative humidity: 40-70 (non condensing)
Standard Components		External Automatic Air Heat Integrated Dryer, Low Ink Alarm System, Air Shaft Media Loading and Take-up, and Automatic Moisturizing and Cleaning Init



Mute Linear Motor System, no belt, no pvc encoder strip; Increase the Carriage moving precision and Span life;



Magnetic grid ,the Carriage drop point more precision



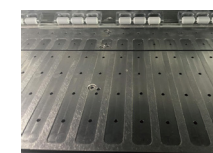
Air expansion shaft rubber strip rolls collection and release, to ensure that the collection of material more stable and flush



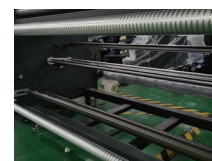
High precision angle sensor



Negative pressure ink supply system: good for long time printing and cleaning



Vertical slotted air guide platform, making the paper surface more flat



Pendulum rod tension structure



2 external infrared drying units, Precise control of drying temperature, reduce energy consumption