



CEJ-3216TX Plus

Receiving and discharging system supports 10000 meters

Industrial High Speed Dye Sublimation Printer



Grando Sublimation Ink

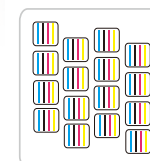


Magenta Vision Polska Sp. z o.o.
Okulickiego 26, 05-500 Piaseczno,
Poland support@magenta-vision.com

* 3.2m Sixteen I3200 Print Heads Speed

600x600dpi - 1pass	830 m ² /h
600x1200dpi - 2pass	450 m ² /h

Sixteen I3200 Heads
CMYK



>> Technical Characteristics

- Receiving and discharging system supporting 10000 meters transfer paper.
- Adopts H-shaped lower support beam structure with heavy-duty wall panels for industrial rack structure
- Configuration of micro-negative pressure ink supply system, more stable ink supply for long time printing.
- Linear motor + magnetic grid, printing work more stable, higher precision, environmental silence.
- high-strength rigid structure and more reasonable take-up and payoff system to provide stable printing effect.

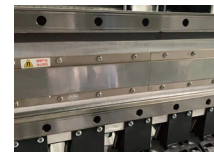
● Technical Specifications

Model		CEJ-3216TX Plus
Print Head		Sixteen i3200-A1 Print Heads
Droplet Size		3.5pl
Printing Width		125.9 in.(3200 mm)
Printing Speed		1pass(600x600dpi): 8934 sqft (830 sqm/h) 2pass(600x1200dpi): 4843.7 sqft (450 sqm/h)
Ink Cartridges	Type	Dye Sublimation Ink
	Supply	Negative pressure ink supply system
	Color	CMYK / CMYKLCMLKLLK
Print Media		Heat Transfer Paper
Print media control		Air expansion shaft Take-up System
Dryer		External Automatic Air Heat Integrated Dryer
Moisturizing unit		Automatic Cleaning and Moisturizing Integrated components
RIP Software		RIIN Beidou Textile Version, Maintop6.0、photoprint、ONYX、NeoStampa、PrintFactory etc.
File Format Supported		JPG / TIFF / PDF, etc
Computer Configuration	Operating System	win7 64 bit / win10 64 bit
	Hardware Requirements	CPU: i7 Processor (9th generation or higher) Hard Disk 500g+ (solid state disk) Operating Memory 16g, Graphics Card: ATI display 4G memory, Motherboard: ASUS, Gigabyte
	Data transmission	USB3.0
Power requirement	Input Voltage	AC 220 V ± 5%, 16A, 50 HZ± 1
	Printer	2500W
	Drying unit power	Maximum 18kw
Weight	Weight(with stand)	(2425 lb.)1100 kg
	Package Weight	(2645 lb.)1200 kg
Dimensions(with stand)		197.5(W)x108.9(D)x68.9(H) in. 5016(W)x2767(D)x1750(H) mm
Package Dimensions		201 (W)x113(D)x72.8(H) in.
Standard Components		5116(W)x2867(D)x1850(H) mm
Working Environment		Temperature 15-32 degrees C, Humidity: relative humidity: 40-70 (non condensing)
Standard Components		External Automatic Air Heat Integrated Dryer, Low Ink Alarm System, Air Shaft Media Loading and Take-up, and Automatic Moisturizing and Cleaning Init



Wide applications in clothing, home decoration fabrics, sampling, shirt, canvas bags, bolster, scooter, flags, textile gadgets etc.

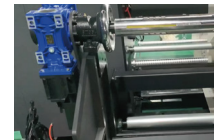
Advanced electrical board system. Standard 16pcs Epson i3200-A1 print heads, has 3.5pl ink droplet and up to 1200dpi resolution. Industrial printer design extends long life of the print head.



Mute Linear Motor System, no belt, no pvc encoder strip; Increase the Carriage moving precision and Span life;



Magnetic grid ,the Carriage drop point more precision



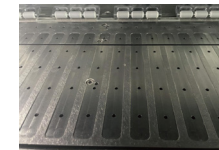
Air expansion shaft rubber strip rolls collection and release, to ensure that the collection of material more stable and flush



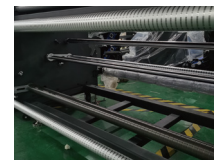
High precision angle sensor



Negative pressure ink supply system: good for long time printing and cleaning



Vertical slotted air guide platform, making the paper surface more flat



Pendulum rod tension structure



2 external infrared drying units, Precise control of drying temperature, reduce energy consumption